

LD175

HIGH-POWER RECESSED INTERIOR/EXTERIOR FLOOR WASHER



R+R



The LD175 is a high-power recessed wall light designed to deliver a very low glare, broad floor wash for large interior and exterior projects. Available light engines include E3, Tunable White and RGBW with colour temperatures ranging 2200K-5000K. The bezel with borofloat glass, consists of a machine anodised face plate that houses the shallow recessed LED and diffuser assembly, to ensure low glare of the broad diffused beam. This is a very tough high-quality fitting, machined from high grade materials, ensuring excellent thermal and light output performance.

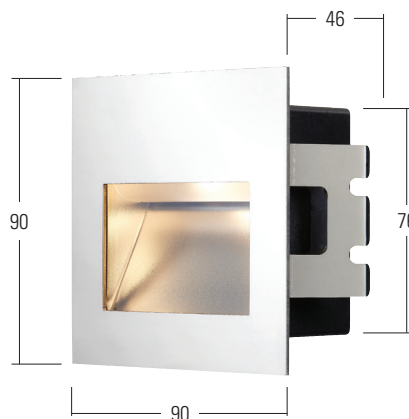
KEY FEATURES

- > E3 engine option, featuring NICHIA LED delivering upto 400 lumens and built-in reverse polarity protection
- > Tunable White, CLR and RGBW LEDs also available
- > Impressive uniform floor washing with a broad diffused beam for lighting wide pathways
- > LED and diffuser assembly recessed deep within the fitting for low glare
- > Polished & passivated 316 stainless steel and RAL paint finishes available
- > Optional first fix concrete-in back box, with no visible fixing or spring clips
- > Switched, 0-10V, Casambi, DMX, DALI or Mains dimmable drivers available






DIMENSIONS

Dimensions in mm

For full dimensions please go to page 4.



SPECIFICATION

Engine	 E3	
LED manufacturer	NICHIA	
Colour temperature*	2200K, 2700K, 3000K, 4000K, 5000K	
Current [Rated Output]	350mA [5W**]	500mA [7W**]
Typical LED Circuit wattage	4.2W	6W
Delivered lumens (L ₁₀₀)***	305	400
Lumens per circuit watt	61	57
CRI (Typ)	85	
Forward voltage (V ₁₀₀)	14V	
Colour consistency	2 SDCM	
Peak intensity	448 cd	
LED lumens	840	
LOR	0.67	
TM30	RF85	RG98
LED lifetime	L90B5 at 90,000hrs	
Applications	   	


These values are based around a LD175-E3-700-LW30

*Lumen output data applies to all colour temperatures


**indicates the nominal power for the LED run at that particular current and includes losses associated with using an 85% efficient driver

***lumen output indicated is without the glare shield. Allow 30% less with the /GS glare shield.

MECHANICAL

Ambient temperature ○ 55°C		350mA	500mA
	 E3	-20°C to 55°C	-20°C to 55°C
	AUS /NZ	-20°C to 25°C	-20°C to 25°C
Glass	Low iron glass 3mm thick		
Materials	Anodised aluminium body, with stainless steel fixing brackets		
Weight of product	1.26kg		
IP rating	IP67		
IK rating	IK08		
Wiring	In-series constant current wiring (pre-wired with 2 core cable at a length of 1m)		

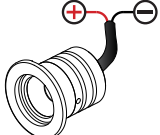
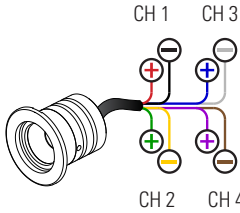
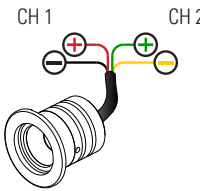
ENVIRONMENTAL

TM65	Available on request	
TM66	2.2	
Repair + Refurbish	 <p>This product is included in our Repair and Refurbish scheme. This offers customers the ability to send back products to us for repair or refurbishment to extend their life without having to buy new fittings.</p>	

COLOUR & DYNAMIC LED ENGINE SPECIFICATION

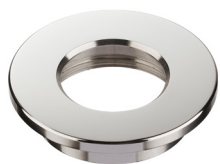
Engine	 CLR - Colour	 RGBW	 TW - Tunable White
LED manufacturer	CREE	CREE	CREE
Colour temperature	Red, Green, Blue, Amber	Red, Green, Blue, 4000K White	Warm White 2700K or 3000K Cool White 4000K or 5000K
Current	500mA	350mA 500mA	500mA
LED power (Max)	7W	5W 7W	6.3W (7W) 3.5W per channel
Applications	  		

MECHANICAL

Glass	6mm thick toughened glass with black ceramic screen print		
Materials	Anodised aluminium body, stainless steel bezel		
Weight of product	0.42kg		
IP rating	IP67		
IK rating	IK08		
Wiring	CLR - 2 core cables at 250mm in length 	RGBW - 8 core cables at 250mm in length 	TW - 4 core cables at 250mm in length 

AVAILABLE FINISHES

Please refer to our finishes guide for full details



POLISHED & PASSIVATED 316 STAINLESS STEEL

- > Marine Grade 316 Steel
- > Pristine mirror like finish
- > Extremely durable
- > Passivated to extensively prolong resistance to corrosion and brown stains caused by oxidation in marine environments
- > Interior & exterior use

PAINT FINISH

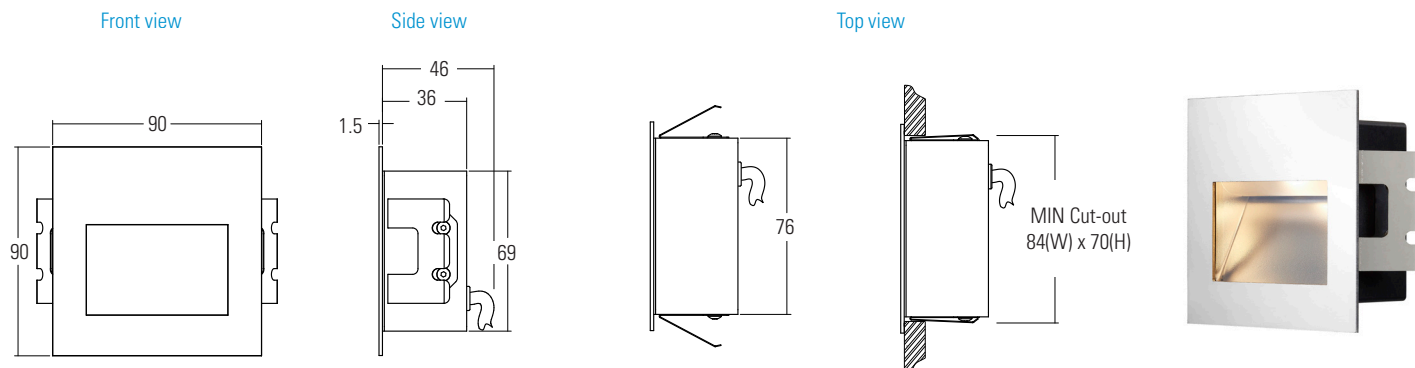
- > Matt Black (RAL 9005), Matt White (RAL 9016) and other RAL colours available
- > Not recommended for footlights in high traffic areas
- > Interior & exterior use

DIMENSIONS AND FIXING ACCESSORIES

Dimensions in mm

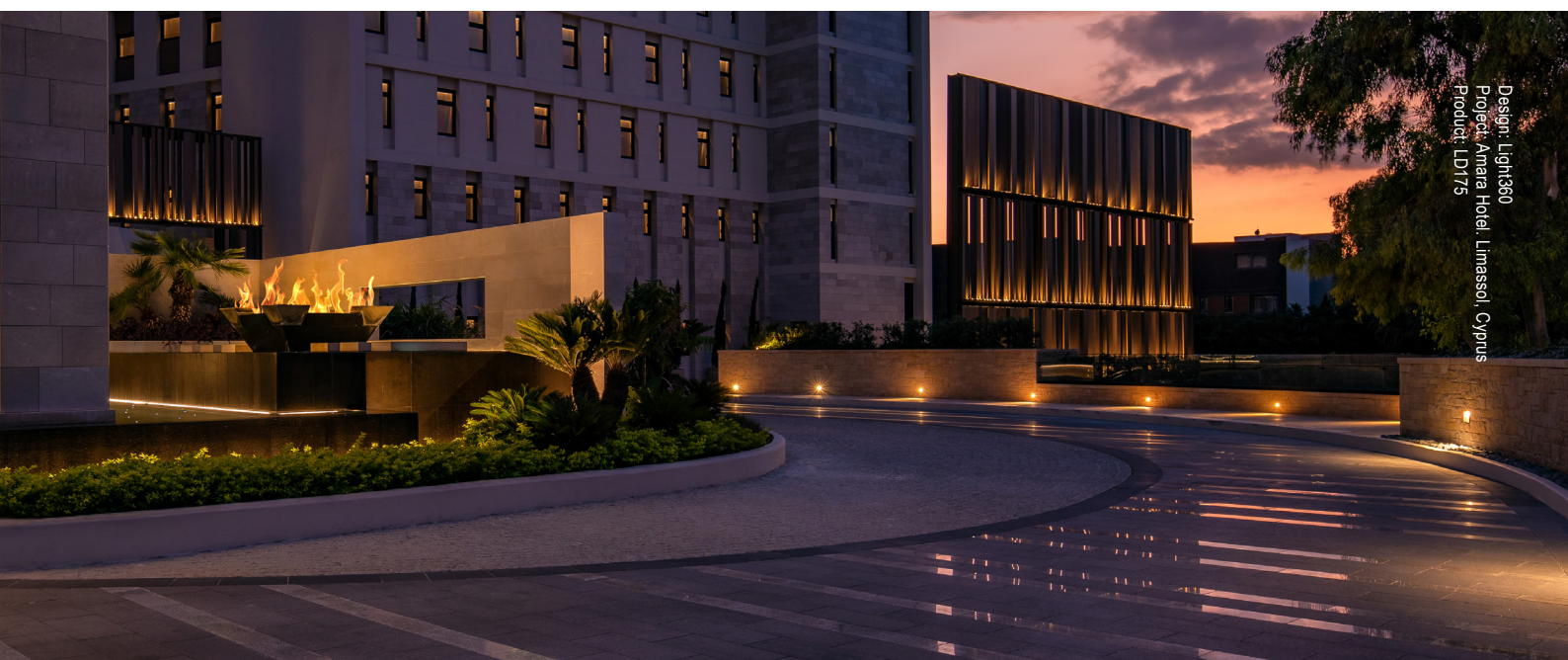
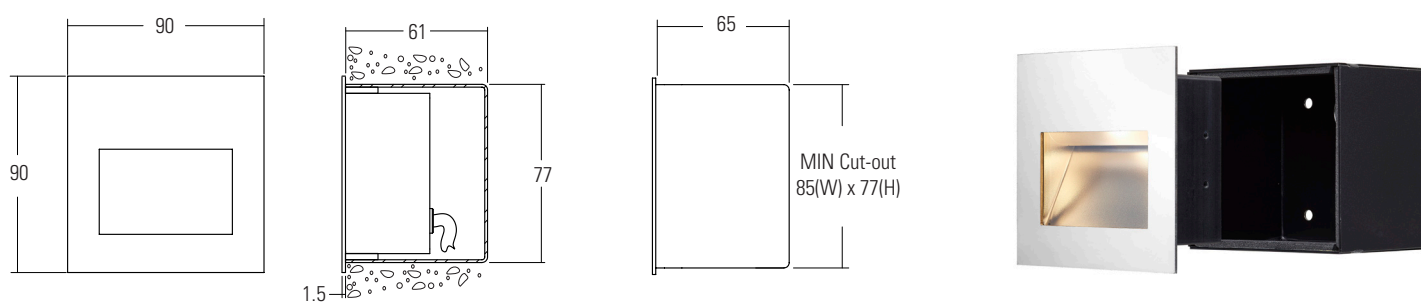
/SC Spring clips

Spring clips are supplied as standard when the concrete-in box is not specified. This fixing option is suitable for the majority of installations.



/CB Concrete-in box

First fix concrete-in box offers the ability to create the correct void in an internal wall only, the fitting is held in place with a silicone gasket. There is space behind the product to make connections. Please note spring clips are not supplied when the concrete-in box is specified.



Design: Light360
Project: Amara Hotel, Limassol, Cyprus
Product: LD175

ORDER CODES & OPTIONS

Example: LD175-TW-350/LW27+LW40/Polished & Passivated 316 Stainless Steel/SC

Light engine & drive current	LED colour	Beam angle	Fixing accessories
LD10236 -	/	/	/

Ambient temperature key: ● 55°C

WHITE LED ENGINES

E3

5W LED at 350mA	LD175-E3-350
7W LED at 500mA	LD175-E3-500

***AUS/NZ:**
Add - AU - suffix to the product code e.g.
LD175-AU-C1-350

Super Warm White (2200K)	/LW22
Extra Warm White (2700K)	/LW27
Warm White (3000K)	/LW30
White (4000K) on request	/LW40
Cool White (5000K)	/LW50

COLOUR & DYNAMIC LED ENGINES

CLR

7W LED at 500mA	LD10236-CLR-500
-----------------	-----------------

Red	/LR
Green	/LG
Blue	/LB
Amber	/LA

RGBW

5W LED at 350mA	LD10236-RGBW-350
7W LED at 500mA	LD10236-RGBW-500

TW

3.5W LED at 350mA	LD10236-TW-350
-------------------	----------------

Tunable White 2700K & 4000K (standard option)	/LW27 + LW40
Tunable White 2700K & 5000K	/LW27 + LW50
Custom	/LW** + L**

Polished & Passivated 316 Stainless Steel (for marine environments)
Paint Finish Black (RAL 9005)
Paint Finish White (RAL 9016)
Paint Finish RAL

/SC
/CB

Drivers
Use with 350mA, 500mA & 700mA constant current LED drivers We have a range of dimmable LED drivers DMX and DALI compatible. Please see the downloads section on our website.